

Resolution No. 8-1121

**ESTABLISHING IOWA COUNTY
SUPERVISORY DISTRICT
2021**

WHEREAS, Iowa County Board Chairman John M. Meyers did establish a Redistricting Committee to assist in complying with Wisconsin Redistricting Statute 59.10 (3); and

WHEREAS, the Iowa County Board of Supervisors did approve a tentative plan at its September 21, 2021 meeting and sent the tentative plan to all Iowa County municipalities; and

WHEREAS, the municipalities have reviewed the tentative plan;

WHEREAS, a public hearing was held on Tuesday, November 9, 2021 to review the final Redistricting plan for Iowa County.

NOW, THEREFORE BE IT RESOLVED the Iowa County Board of Supervisors do hereby establish the following twenty-one (21) Iowa County Supervisory Districts as described below.

District #1

Consists of the Town of Arena Ward 1 and Village of Arena Ward 1.

District #2

Consists of the Town of Arena Ward 2.

District #3

Consists of the Town of Pulaski Ward 1, Village of Avoca Ward 1, Village of Muscoda Ward 3 and Town of Highland Ward 3.

District #4

Consists of the Town of Arena Ward 3, Town of Clyde Ward 1, Town of Wyoming Ward 1, Town of Dodgeville Ward 2, Town of Highland Ward 4.

District #5

Consists of the Town of Highland Ward 1, Village of Highland Ward 1.

District #6

Consists of Town of Dodgeville Ward 1, Town of Mineral Point Ward 2 and City of Dodgeville Ward 10.

District #7

Consists of Town of Dodgeville Ward 3, Town of Ridgeway Ward 2, Town of Brigham Ward 1 and City of Dodgeville Ward 9.

District #8

Consists of City of Dodgeville Wards 1 & 2.

District #9

Consists of City of Dodgeville Wards 3 & 4.

District #10

Consists of City of Dodgeville Wards 5 & 6.

District #11

Consists of City of Dodgeville Wards 7 & 8.

District #12

Consists of Village of Barneveld Ward 1.

District #13

Consists of Town of Moscow Ward 1, Town of Waldwick Ward 1, Village of Blanchardville Ward 2, Village of Hollandale Ward 1.

District #14

Consists of Town of Brigham Ward 2 and Village of Barneveld Ward 2.

District #15

Consists of Village of Ridgeway Ward 1, Town of Ridgeway Ward 1 and Town of Waldwick Ward 3.

District #16

Consists of Town of Mineral Point Ward 1, Town of Waldwick Ward 2 and the City of Mineral Point Wards 3 & 5.

District #17

Consists of City of Mineral Point Wards 1 & 4.

District #18

Consists of City of Mineral Point Wards 2 & 6.

District #19

Consists of Town of Eden Ward 1, Town of Highland Ward 2, Village of Cobb Ward 1 and Village of Montfort Ward 2.

District #20

Consists of Town of Linden Ward 1, Village of Linden Ward 1 and Town of Mineral Point Ward 3.

District #21

Consists of Town of Mifflin Ward 1, Town of Linden Ward 2, Village of Rewey Ward 1, Village of Livingston Ward 2.

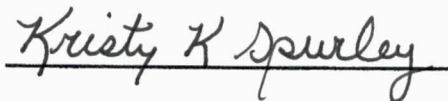
Adopted this 9th day of November, 2021.



John M. Meyers

Iowa County Chair

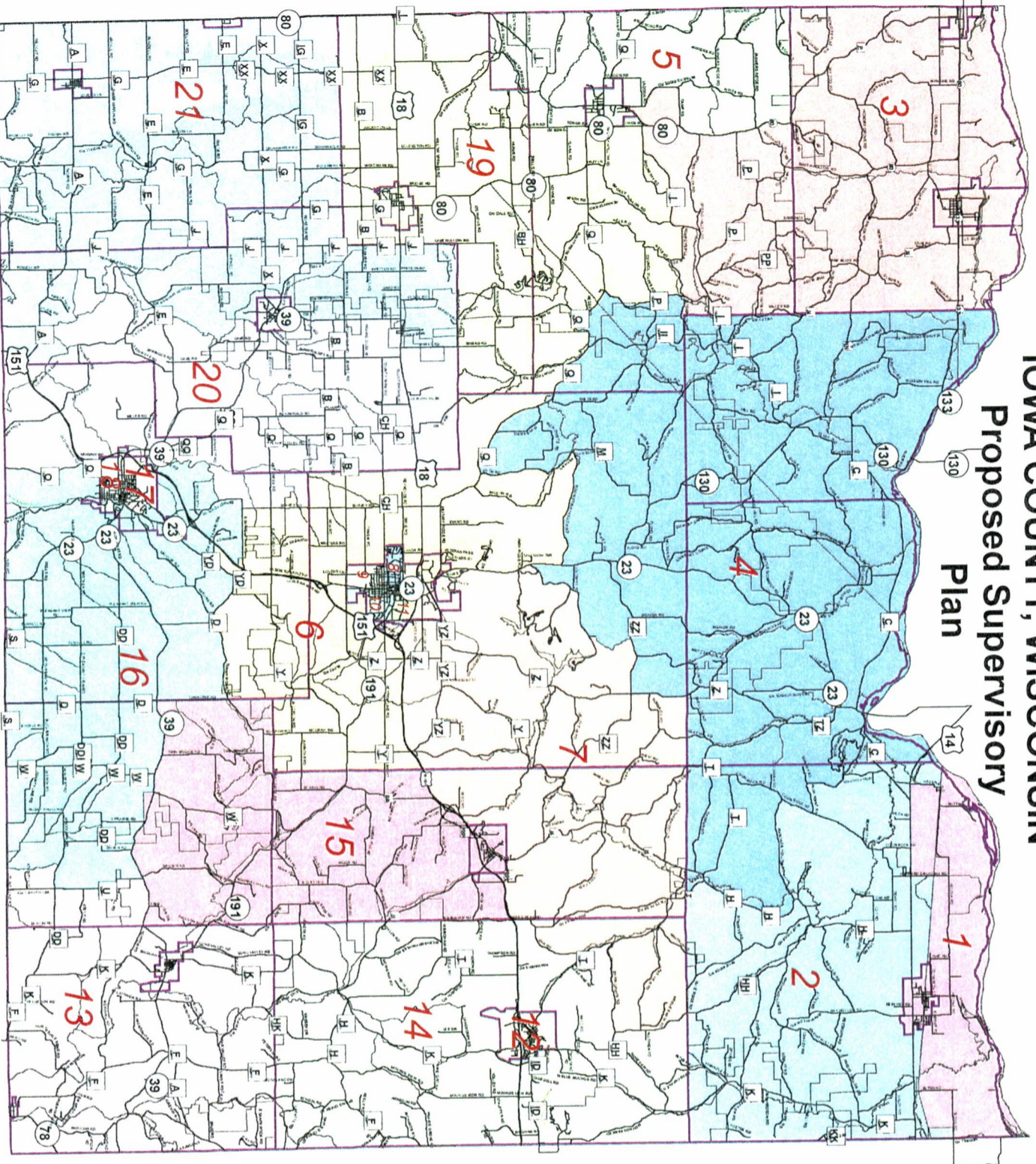
ATTEST:



Kristy K. Spurley

Iowa County Clerk

IOWA COUNTY, WISCONSIN Proposed Supervisory Plan



District	Population	Target	Difference	Deviation (%)
1	1,130	1,129	1	0.09
2	1,126	1,129	-3	-0.27
3	1,130	1,129	-1	0.09
4	1,108	1,129	-21	-1.86
5	1,131	1,129	2	0.18
6	1,127	1,129	-2	-0.18
7	1,113	1,129	-16	-1.42
8	1,141	1,129	12	1.06
9	1,136	1,129	7	0.62
10	1,130	1,129	1	0.09
11	1,143	1,129	14	1.24
12	1,126	1,129	-3	-0.27
13	1,128	1,129	-1	-0.09
14	1,134	1,129	5	0.44
15	1,128	1,129	-1	-0.09
16	1,127	1,129	-2	-0.18
17	1,126	1,129	-3	-0.27
18	1,138	1,129	9	0.80
19	1,129	1,129	0	0
20	1,129	1,129	0	0
21	1,129	1,129	0	0

Overall Plan Deviation 3.10%

Prepared by the Office of Planning & Strategy
 The accuracy of the information contained herein
 is not guaranteed. This map is not a substitute
 for a professional survey. It is intended for
 informational purposes only. It is not to be used
 for any other purpose without the express
 written consent of the County Board.

